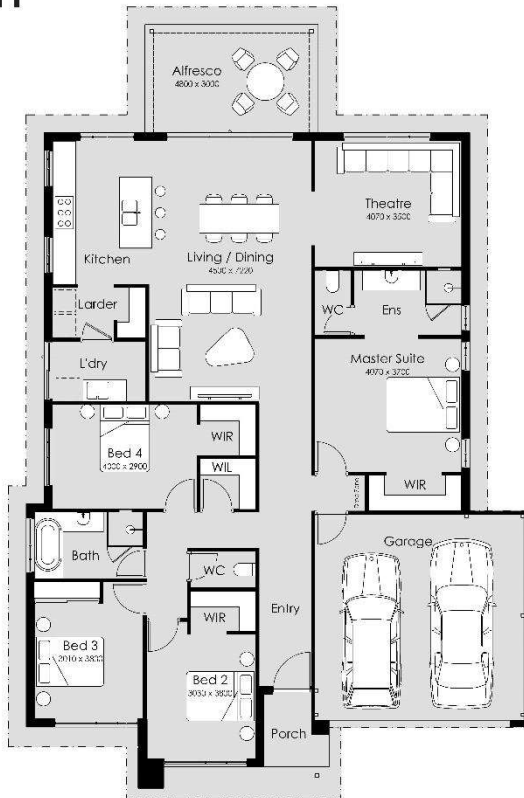


HOUSE & LAND FROM \$789,100

Providence Estate, Wellard
Lot 611 Worthington Circuit
Block size 450 sqm
15 metre frontage



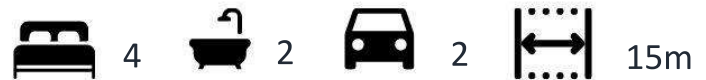
BIRCH



OVERALL WIDTH- 13.89m
OVERALL LENGTH- 21.85m
MIN BLOCK WIDTH- 15m
MIN BLOCK LENGTH- 25m
TOTAL AREA- 227.32m²

ANY REPRODUCTION IN WHOLE OR PART OF THIS DESIGN IS NOT PERMITTED AND IS SUBJECT TO 2021 ©

FLOOR PLANS ARE FOR ILLUSTRATIVE PURPOSES ONLY TO ASSIST IN DEPICTING THE LOOK AND FEEL OF THE DESIGN.



- ✓ WA's Top Project Builder
- ✓ Designer Front elevation options
- ✓ Reverse Cycle Air-Conditioning
- ✓ Internal wall painting
- ✓ Window treatments
- ✓ Quality flooring throughout
- ✓ Solar PV System
- ✓ High ceiling(s) throughout
- ✓ LED lighting
- ✓ 20mm Vitreous benchtops

Contact: Giuseppe Amato
0416403747
gamato@summithomesgroup.com.au

Disclaimer: Summit Homes is not the owner of the land. Summit Homes has permission from the owner of the land to advertise this house and land package at the specified price. A separate H&L contact will be generated by Summit Homes and the relevant developer. At the time of listing, the price was current and the land was still available for sale. The land price does not include transfer duty, settlement costs and other fees associated with the settlement of the land. Images used are for illustrative purposes only. BC 10689

